

# Butterflies Class

## Spring 1 Newsletter



This newsletter aims to set out the key information to be shared about this half term. We will keep you up to date on any extra information on our class page and through text messages.

### Our learning in January and February:

This half term, we continuing to discover prehistoric life in the topic: **Stone Age to Iron Age**

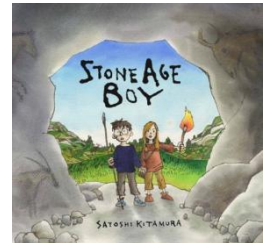
During this half term, we will cover the following areas:

- What was life like during the Neolithic period?
- What can we learn about life in the Stone Age from a study of Skara Brae?
- Did bronze use change everything in prehistoric Britain?
- Why was Stonehenge built?
- How much did life change in the iron age?
- Continuity and change in homes, tools and diet across the whole period.

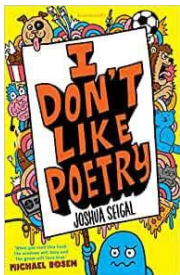
### English:

We start this half term with instructional writing. After discovering a sand giant had invaded the playground over the Christmas holidays, we will work with the model text 'How to trap a Sand Giant'. Children will create a set of instructions on how to trap a mythical creature of their own - linking back to our information reports in the Autumn term.

Our second writing unit is based on the book 'Stone Age Boy' by Satoshi Kitamura. During this narrative unit, children will create a sequel portal story with the main character returning to the Iron Age. They will write a portal story of their own going back to any time or place in history (real or imaginary).



Children will be given spellings to learn at home on a Monday each week (in their spelling folders). They will be tested on the words on a Friday. These spellings will also be taught in class.



### Class Book:

I DON'T LIKE POETRY by Joshua Seigal

### Maths:

Our focus for this half term will be multiplication, division, length and perimeter including:

- Multiply a 2-digit number by a 1-digit number, with and without exchange.
- Divide a 2-digit number by a 1-digit number with no exchange and with remainders.

- Measure in millimetres, centimetres and metres.
- Equivalent lengths (metres and centimetres)
- Compare, add and subtract length
- Measure and calculate perimeter.

Children are expected to know their 2, 3, 4, 5, 8 and 10 times tables by the end of year 3. We are currently working on these and updates will be provided of target tables.

### **Other curriculum areas and what we will be covering include:**

- Science – Forces and Magnets
- Music – Brass lessons
- PSHE – Money Matters
- Religious Education - What do different people believe about God?
- Art – Mixed Media Cave art
- DT – Cooking – Stone Age Stew
- PE – **Thursday** – Dance and **Friday** - Gymnastics
- French – Unit ‘all about me’.

### **P.E.**

The children will have two P.E. lessons each week. Children need to bring in a full PE kit to change into at school. As the weather starts to get colder, we recommend joggers and a jumper/hoodie in addition to shorts and T-shirts. Please also make sure that your child has a named water bottle.

### **Supporting learning at home:**

- **Reading:** Every child needs to read frequently. In year 3, children need to read for at least 15-20 minutes most days and talk to an adult about what they have read. Please encourage your child to use their reading diary to record the reading that they have done each day and then obtain a signature from the adult that has listened to them. Reading diaries will be checked every Monday and Friday and they should be in school **every day**. Book change will take place on a Monday, but children can change their books more frequently in the morning if they choose.
  - **Homework:** Children will be set either a reading comprehension activity or a maths activity as weekly homework on a **Friday** which will be due back the following **Tuesday**. This will begin on **Friday 16<sup>th</sup> January**. You may support your child in tasks but please ensure if they are struggling that they know they can ask us for help.
- Children are welcome to do their homework in school, during playtime, if they do not have time at home. Homework should support learning, not cause stress. If your child finds it difficult, please stop and bring it into school for support.

### **Useful information:**

**Coats:** Please make sure your child brings a coat so we can go outside!

Also please ensure that **EVERYTHING is named!** If it isn't, and it gets lost, we cannot return it.

If you have any questions to ask, or have information to tell us, please get in touch via the school office ([julie.carter@littleeaton.derbyshire.sch.uk](mailto:julie.carter@littleeaton.derbyshire.sch.uk) or 01332 831471). We will also be available on the playground at the end of the school day.

Thank you in advance for your support.

Jayne-Ann Dilleigh, Sarah Holmes and the Year 3 team.

