

Ants Class

Spring 1 Newsletter



This newsletter aims to set out the key information to be shared about this half term. We will keep you up to date on any extra information on our class page and through text messages.

Our learning in January and February:

This half term, we continuing to discover prehistoric life in the topic: **Stone Age to Iron Age**

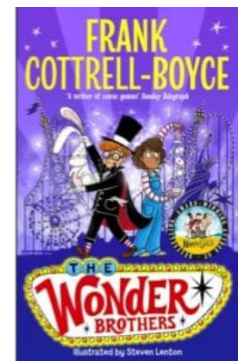
During this half term, we will cover the following areas:

- What was life like during the Neolithic period?
- Did bronze use change everything in prehistoric Britain?
- How much did life change in the iron age?
- What do we know about prehistoric life from archaeological evidence found in the East Midlands?
- Continuity and change in homes, tools and diet across the whole period.

Class Book:

Our first class book is a short story linked to our history topic called 'How to Skin a Bear'.

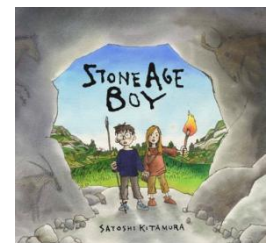
We will then read, 'The Wonder brothers' by Frank Cottrell-Boyce



English:

We start this half term with instructional writing. After discovering a sand giant had invaded the playground over the Christmas holidays, we will work with the model text 'How to trap a Sand Giant'. Children will then create a set of instructions on how to trap a mythical creature of their own - linking back to our information reports in the Autumn term.

Our second writing unit is based on the book 'Stone Age Boy' by Satoshi Kitamura. During this narrative unit, children will create a sequel portal story with the main character returning to the Iron Age. They will then write a portal story of their own going back to any time or place in history (real or imaginary).



Children will be given spellings to learn at home on a **Monday** each week (in the back of their reading journals). They will be tested on the words on a **Friday**. These spellings will also be taught in class.

Maths:

Our focus for this half term will be written multiplication, measure and perimeter then written division. It will include:

- Factors
- Multiplying and dividing by 10 and 100
- The expanded column method of multiplication
- Measurements in km and m
- Equivalent lengths
- Perimeter on a grid and of rectangles
- Perimeter of rectilinear shapes (including where lines are missing)
- Written division

Children are expected to know their times tables, up to 12 x 12, by the end of year 4. They will be tested weekly on a **Wednesday** on their own focus times table as part of our individual challenge. Parents will be informed of their focus via text each week.

Other curriculum areas include:

- Science: Animals including humans
- PE – Fitness / Gymnastics (**Friday**)
- Music – Blackbird
- PSHE – Safety first
- Religious Education - Why is Jesus inspiring to some people?
- Art – Mixed Media Cave art
- DT – Cooking – Stone Age Stew
- French – taught by Mrs. Schumann on a Wednesday

Supporting learning at home:

- **Reading:** Every child needs to read every day; including weekends. In Year 4, children should aim to read for at least 15-20 minutes and talk to an adult about what they have read. Children will be given a reading journal to record their reading. During this half term, children will be supported in setting up and organising this journal and they should be in school **every day**. As the year progresses, children will become more independent in organising their own journal. We appreciate parents support in checking and encouraging children to update their reading regularly and listening to children read.
- **Times Tables:** Please ensure children practise using TTRockstars (login information is in the reading journal), hit the button (<https://www.topmarks.co.uk/maths-games/hit-the-button>) or maths frame MTC check (<https://mathsframe.co.uk/en/resources/resource/477/Multiplication-Tables-Check>)
- **Homework:** Children will be set weekly homework on a Wednesday which will be due back the following Monday. It will follow this **Wednesday-Monday** pattern throughout the year. You may support your child in tasks but please ensure if they are struggling that they know they can ask us for help.
 - Children are welcome to do their homework in school, during lunchtime, if they do not have time at home. Homework should support learning, not cause stress. If your child finds it difficult, please stop and bring it into school for support.

Useful information:

Coats: Please make sure your child brings a coat so we can go outside!

PE: Children need to bring in a full PE kit to change in school. As the weather starts to get colder, we recommend joggers and a jumper/hoodie in addition to shorts and T-shirts. Please also make sure that your child has a named water bottle. In Spring one, we will have PE on a **Friday**.

Please ensure everything is clearly named so it can be returned.

Key Days

Monday – Homework to be handed in

Wednesday – Times table test

Friday – Spelling test

Friday – PE

If you have any questions to ask, or have information to tell us, please get in touch via the school office (julie.carter@littleaton.derbyshire.sch.uk or 01332 831471). We will also be available on the playground at the end of the school day.

Thank you in advance for your support,

Karen Gardiner, Paul Schumann and the Year 4 team