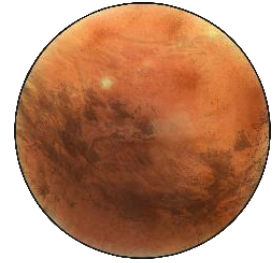


Mars Class News

January - February 2025

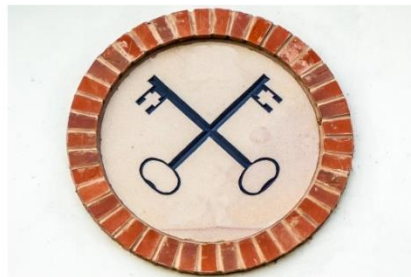


Welcome back to school, we hope you all had an enjoyable and relaxing Christmas break.

Our new Geography and history topic this term will focus on, Fieldwork skills, Little Eaton village and Thomas Bates. The key objectives will be;

- Use Digimap to name and locate the countries, capital cities and seas of the United Kingdom.
- Begin to read OS map symbols.
- How did Thomas Bates help make Little Eaton what it is today?
- To use historical maps of the local area to investigate change over time.
- To create a sketch map showing features of Thomas's Bate's life in Little Eaton.
- Follow the sketch map, add additional features and assess its accuracy.

Thomas Bates
(29th June 1844 – 26th March 1903)



Class Book:

During this term, we will be reading a range of different poems

English:

In our narrative work this half term we will be aiming to scare our reader by writing a suspense story. We will use the talk for writing sequence based on the model 'The Old Manor House' before writing our own scary stories based on the Abandoned cottages on Alfreton Road.

Alongside learning the rules and patterns of spellings each week in school, spelling lists will be sent home for children to practise as part of their weekly homework tasks. Lists will be provided alongside the homework on a Thursday. The spelling test will be the following Wednesday.

Maths:

This half term will cover units on multiplication and division, and then length and perimeter including:

- Multiplying and dividing by 10 and 100
- Multiplication written methods
- Division written methods
- Equivalent lengths (m and km)
- Perimeter of a rectangle
- Missing lengths in perimeter

Other curriculum areas include:

- Science: Animals including humans
- PE – Dodgeball with Mr Samuels (Thursday) and Dance (Wednesday)
- Music – To sing and learn to play the Glockenspiels to the song 'Blackbird'
- PSHE Safety first
- Computing – Programming B – Scratch
- DT – Photograph frames
- French – will begin again on Wednesdays (Taught by Mrs Schumann)

Supporting learning at home:

- **Reading:** Every child needs to read every day; including weekends. In Year 4, children should aim to read for at least 15-20 minutes and talk to an adult about what they have read. Children should record their reading in their reading journal. Parents are encouraged to read with children and add entries into the journal.
- **Times Tables:** Children will work on our times table challenge with a test on their individual focus table on a **Thursday**. Children will progress through the challenge at their own pace and the weekly focus will be shared via text each week.
 - Please ensure children to practise using TTrockstars (login in back of reading journal), hit the button (<https://www.topmarks.co.uk/maths-games/hit-the-button>) or maths frame MTC check (<https://mathsframe.co.uk/en/resources/resource/477/Multiplication-Tables-Check>)
- **Homework:** Children will be set weekly homework on a Thursday which will be due back the following Tuesday. It will follow this **Thursday-Tuesday** pattern throughout the year. You may support your child in tasks but please ensure if they are struggling that they know they can ask us for help.
 - Children are welcome to do their homework in school, during playtime if they do not have time at home. We really don't want homework to be a source of stress or anxiety, only an extension of the children's learning at school. If your child is struggling with their homework, please stop and bring it in to school. An adult will go through it with them.

Useful information:

Coats: Please make sure your child brings a coat so we can go outside! Also ensure that **EVERYTHING is named!** If it isn't, we cannot return it.

PE: Children need to bring in a full PE kit to change in school. As the weather starts to get colder, we recommend joggers and a jumper/hoodie in addition to shorts and T-shirts. Please also make sure that your child has a named water bottle. In Autumn two, we will have PE on a **Wednesday** and **Thursday**.

Key Days

Tuesday – Homework to be handed in

Wednesday – Spelling test

Thursday – Times Table test

Wednesday and Thursday – PE days

Thank you in advance for your continued support,

Karen Gardiner, Jayne-Ann Dilleigh and the Year 4 team